



OLDER YOUTH PROGRAM

FOR TRANSITION AGE YOUTH 14-24

LOGIC MODEL

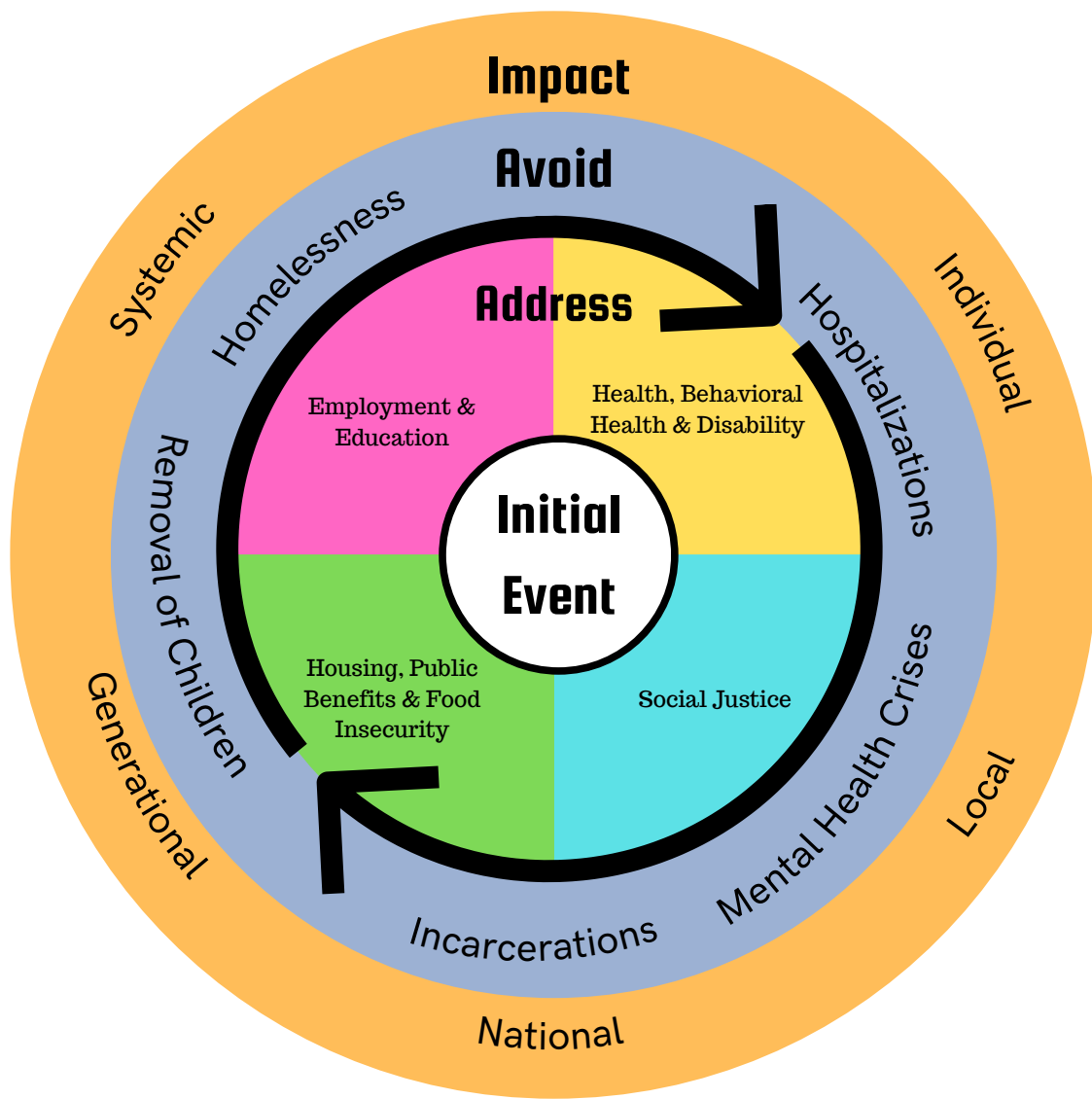


TABLE OF CONTENTS

Event Categories	3	Two-Generation Overview	5
Service Overview	3	Scenario #2	6
Common Pitfalls	4	Projected Impact	7
Scenario #1	4		

EVENT CATEGORIES

AND CONNECTED SERVICES

EMPLOYMENT & EDUCATION

Education advocacy
Special education advocacy
Education intake assessment
Workforce development
Two-generation advocacy

HEALTH, BEHAVIORAL HEALTH & DISABILITY

Medical coverage & insurance
Mental health treatment
Medical-legal partnership
Disability advocacy
Intellectual disability & autism waivers
Adult guardianships
Two-generation advocacy



HOUSING, PUBLIC BENEFITS & FOOD INSECURITY

Housing advocacy
Social Security & public benefits
Connecting clients to food
Connecting clients to community services
Two-generation advocacy

SOCIAL JUSTICE

MDJ summary offense representation
Juvenile record expungement
Credit repair
Driver's license advocacy
Two-generation advocacy

COMMON PITFALLS AVOIDED

AND APPLIED SCENARIO

By addressing all four event categories, we help clients avoid the most common setbacks faced by former dependent youth not receiving KidsVoice services (see right). Now, let's take a closer look below.

Homelessness
 4+ ER visits per year
 Mental health hospitalizations
 Removal of children
 Incarcerations

Scenario #1: Michael, a 21-year-old former client with untreated depression and a significant history of trauma has been arrested for disorderly conduct just hours after losing his job.

APPLICABLE SERVICES

SETBACKS AVOIDED*

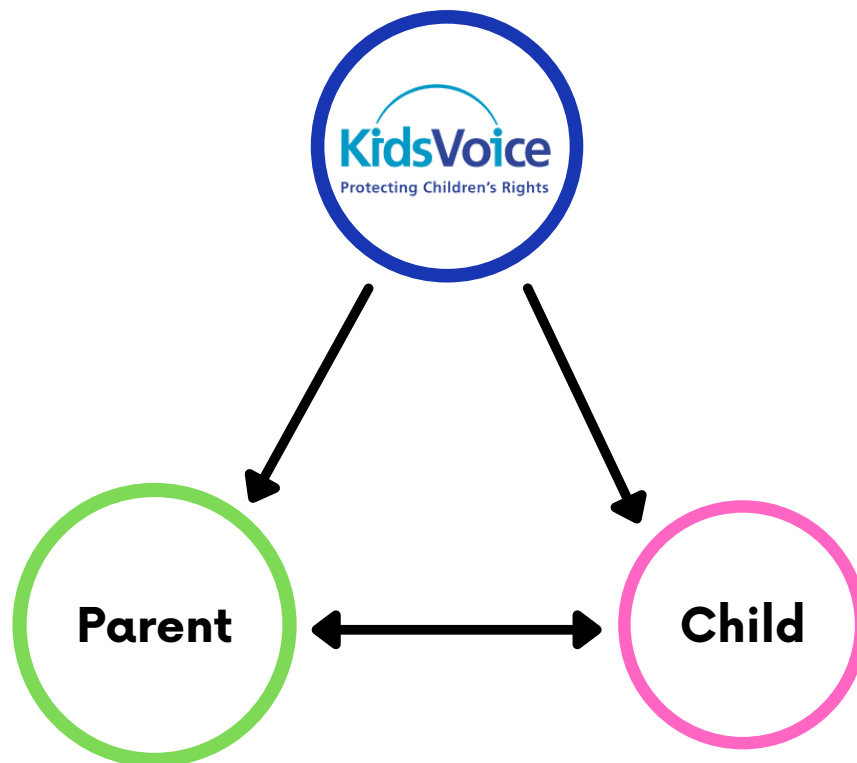
Bill assistance, social security, SNAP, public benefits, etc.	Debt and collections Loss of housing Food instability
MDJ Representation	Incarceration Failed background checks
Adult mental health services, insurance	Self-medication Mental health crisis Incarceration Hospitalizations
Job assistance	Loss of housing Food instability

*These setbacks could lead to removal of children, if present

TWO-GENERATION ADVOCACY

SECURING THE FAMILY

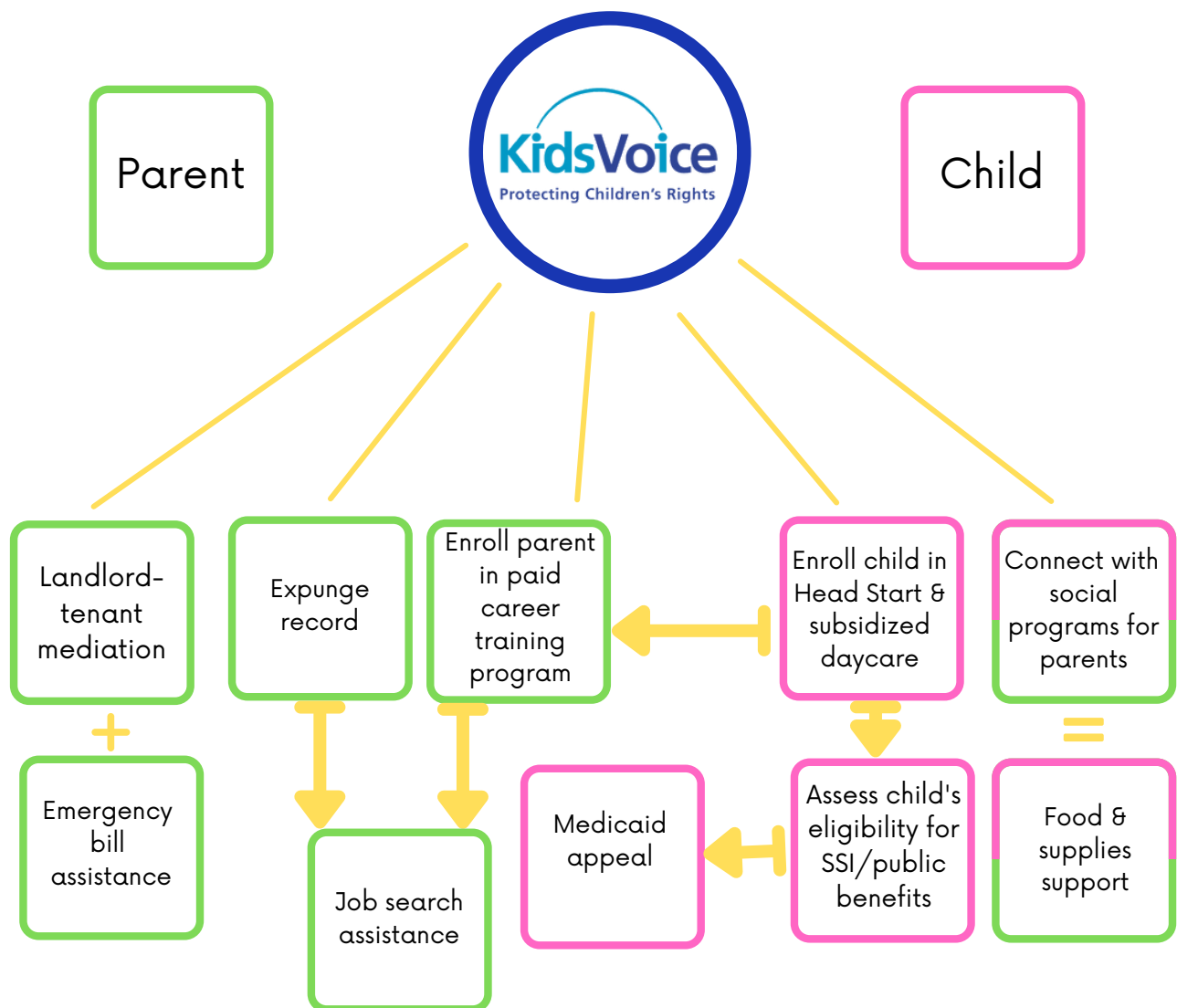
The logic model can also be applied to two-generation families, with services for parent and child building a safety net for the whole family.



KidsVoice's two-generation advocacy program helps foster youth who are parents to attain the education, job training, and life skills they need to support a family while helping ensure that their children have the services they need to prepare to enter school.

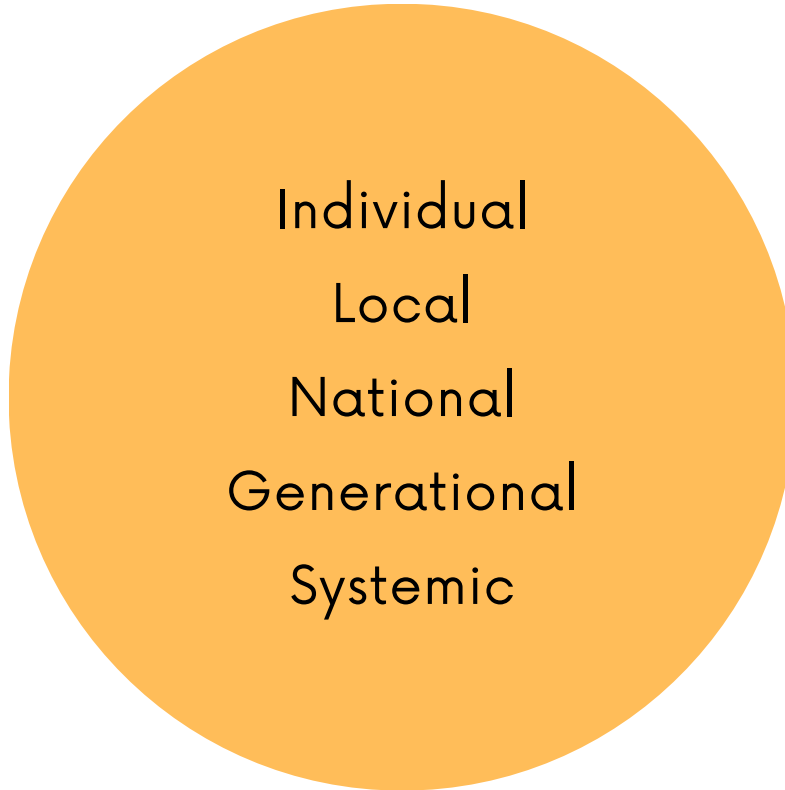
APPLIED MODEL

Scenario #2: Samantha, 23, has received a final warning from her landlord due to overdue rent. KidsVoice's holistic assessment finds that she is a single parent with a 3-year-old. The former client works 25 hours per week at \$8 an hour and cannot afford child care. Her job prospects are limited due to a juvenile record, but she enjoys working with her hands.



PROJECTED IMPACT

THROUGH 2027



2022-2023:

- ACHIEVED: Local application to other youth and adults

2023-2025:

- Replication in additional PA counties

2025-2026:

- Replication in other states
- Universal local representation in MDJ cases

2026-2027:

- Community justice alternative to MDJ summary offenses